

# Beam

Decorative (Non-Structural)  
Ceiling Beam Systems

BLAZE

**ASI**  
ARCHITECTURAL

123 Columbia Court North, Chaska, MN 55318 | 888.258.4637 | 952.448.6905  
sales@asiarchitectural.com | www.asiarchitectural.com

# Beam Decorative (Non-Structural) Ceiling Beam System

ASI's Beam ceiling system provides a simple and inexpensive alternative for improving the design of a room with the appearance of solid wood, but without the associated weight and cost. The system is designed to fit together based on project requirements, and custom widths, lengths, and heights are available. Beams may also be used alongside other ceiling systems. Veneer and grain matching as well as end-matching are available options.

## FEATURES

### APPEARANCE & COLOR

Available in wood veneer in the species shown below\*  
Blocked beam ends  
Sleeved beam ends  
Finished beam ends  
Veneer end matching available  
FSC available  
May contribute to LEED® projects  
FINISHES: Clear lacquer top coat or stained to match

### CORE / FIRE RATING

Available core materials are:  
Class A Fire Rated Particle Board  
Class A Fire Rated MDF

### MOUNTING OPTIONS

Eye-bolt suspension or blocking method (with trim screws)

## SIZES

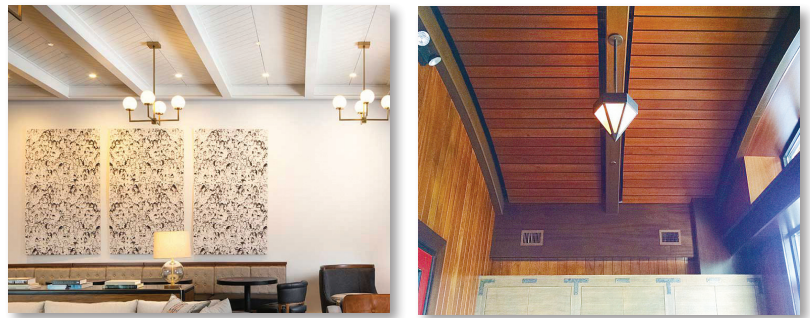
Minimum 4" width; maximum 18" height;  
maximum 10' length (per section);  
three beam faces not to exceed  
48" total



## MOUNTING OPTIONS

Eye-bolt suspension; blocking method  
(with trim screws)

## MODULARS



## COLOR CHART



\*Natural wood products vary in color and grain. Due to differences in printing, actual color may differ from images above.



123 Columbia Court North, Chaska, MN 55318 | 888.258.4637 | 952.448.6905  
sales@asiarchitectural.com | www.asiarchitectural.com

©2022 ASI Architectural V2